

WORKIO

clarity

DP-CL22 / DP-CL18



Color Your Office Quickly

- Up to 22 ppm in Color and Black & White (DP-CL22)
- Up to 18 ppm in Color and Black & White (DP-CL18)
- Quick Start Warmup and Low Energy Consumption
- Advanced HDD Security Functions
- Quick PDF Print
- Photo Mode for Enhanced Gloss and Quality
- IPv6-Ready Standard Network Connectivity

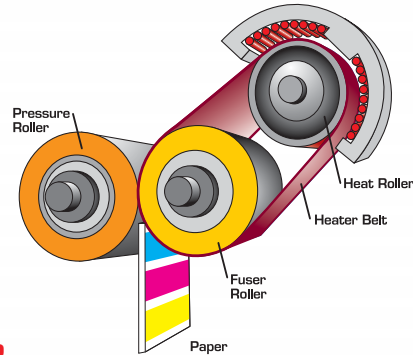
Panasonic ideas for life

High Speed & Quality



Induction Heating (IH) Technology

Most conventional color laser printing devices indirectly heat the fuser roller using a halogen lamp that requires high energy consumption and long warm up time. To reduce warm up time for quick printing on demand, the fuser roller has to be pre-heated. Energy consumption efficiency or office productivity, which should come first?

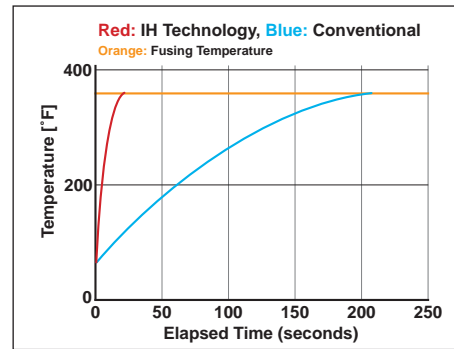


Quick Start while Saving Energy

Panasonic has a smart solution for fast warm up time while consuming less energy. Our Induction Heating (IH) technologies along with a redesigned, low thermal capacity heater belt, has eliminated the need for pre-heating. By maximizing the efficiency of the heating process, these Energy Star® printers are fast, efficient and economical.

Thanks to Panasonic's IH Technology, the DP-CL22 / CL18 warms up faster and prints from sleep mode while utilizing only 8W (DP-CL18) or 15W (DP-CL22) of power. These technological breakthroughs contribute to producing quick color documents, help to conserve the environment and reduced energy costs.

Fast Warmup



High speed One-Pass Printing

The WORKiO DP-CL22 / CL18 utilizes innovative one-pass technology. Incorporating four in-line 1200 dpi laser diodes and imaging drums, the Panasonic color laser printer is able to produce vibrant, full color documents at speeds comparable to monochrome printing. A cost-effective, state of the art printing process that saves time and money.

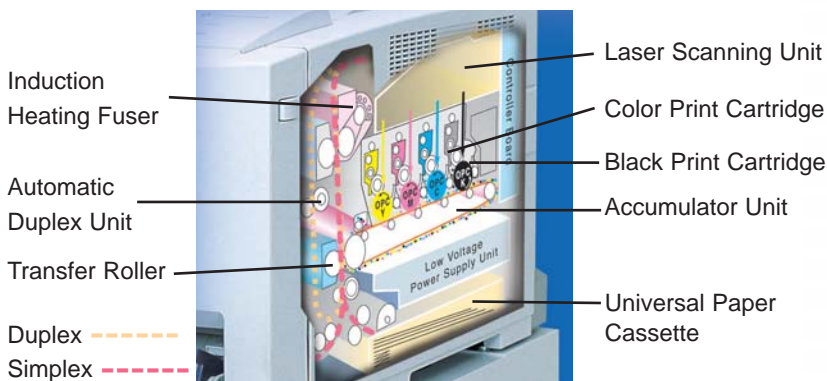


Fast Warmup,
Low Energy

Enhanced Color Quality

Thanks to its high-resolution 1200 x 1200 dpi printing, color reproduction is especially vivid. In addition, because the printer engine and controller are optimized for the color setting best suited for photographs, the DP-CL22 / CL18 delivers impressive results when used for photo printing.

One-Pass Printing Technology



Improve Your Ideas with Fast and Brilliant Color

The Panasonic WORKiO DP-CL22 / CL18 makes it easy for small and mid-size businesses to take advantage of the quality and convenience of color laser printing.

With true 1,200 x 1,200 dpi print resolution, versatile network capability, and easy operation all in a compact, low-maintenance design — the DP-CL22 / CL18 is an ideal solution for virtually any office where color printing is required.

And, thanks to Panasonic's IH (Induction Heating) technology, it warms up faster and uses less power. In addition to standard network connectivity with 100Base-TX/10Base-T Ethernet port, the DP-CL22 / CL18 Color Laser Printer is certified for the new-generation IPv6 network protocol.

WORKiO[®]
DP-CL22 / DP-CL18



Versatile & User Friendly

Convenient Printing Capability

Pages per Sheet

Up to 16 pages can be printed next to each other on single sheets. This feature is convenient for printing test sheets and conserving paper.

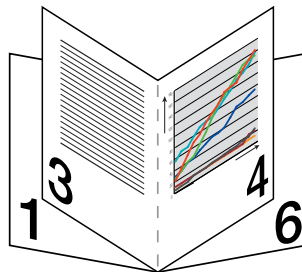


Fit to Output Paper Size

Scales the source document to fit the specified paper. This feature is convenient for printing Ledger or A3 source documents on to Letter or A4 paper, for example.

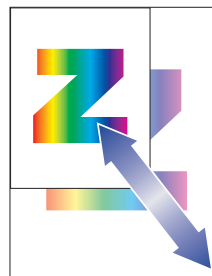
Booklet

This easy-to-use feature automatically converts full-page documents into half size booklets without the need for expensive finishing options or hard to use specialty software. Just print and fold in half for professional style booklets.



Zoom

You can reduce or enlarge (25 – 400%) documents by specifying the desired magnification. You can also specify where scaled documents are positioned on the page.



Poster

Enlarges a single-page source document for printing on a specified number of sheets. You can use this feature to print large posters – just assemble the printed sheets.



Photo Mode

The new Photo mode improves the glossy finish on the surface and enhances contrast to provide beautifully smooth reproduction of color photo images. Now you can add real flair to your business documents with gorgeous color photos.



Automatic Duplex for Efficient Double-Sided Printing

These printers are designed to accommodate an automatic duplex unit, enabling effortless double-sided printing. Cost effective and speedy, double-sided prints are output at an incredible rate of up to 21 ppm* in both Color and Black & White.

With Panasonic's advanced technology, the printer's speed remains the same even when printing two-sided documents. Save time... Save paper... Save money!

* Approximate automatic duplex print speed is 20.9 ppm; DP-CL18: up to 16.9 ppm with automatic duplex unit (option)

Convenient Operation Indicator

Convenient operation indicators located on the edge of the front panel make it easy to check the current operation mode even when you're away from the printer.



Enhanced Network Connectivity IPv6-ready Ethernet port

Thanks to Panasonic's intelligent design, you can use the DP-CL22 / CL18 in an IPv4 environment, an IPv6 environment, or even an environment where both protocols co-exist.

* The provided printer utilities which utilize IP protocol, such as the Device Monitor, are not compatible with IPv6.

USB 2.0 and Parallel Port

The DP-CL22 / CL18 is also equipped with a full-speed USB 2.0 and IEEE1284 bi-directional parallel interface so it can be used as a stand-alone unit. You can also simultaneously connect to all 3 ports.





Advanced Management & Security



High yield, easy-to-replace consumables

High-yield toner cartridges can be easily replaced from the top of the printer. Improvements to the toner particle and the toner supply system, as well as greater internal system efficiency helps to ensure a longer service life for the toner cartridge and other consumables.



High-Capacity Paper Supply

The DP-CL22 / CL18 comes standard with a 530-sheet paper cassette and a 100-sheet multi-purpose tray. Two optional Paper Feeders can be added to provide a maximum paper capacity of 1,690 sheets.



(shown above with optional paper feeders)

Advanced HDD Security Functions^{†1}

Hard Disk Data Erasing

Used with the printer's optional internal Hard Disk Drive (KX-CLHD2), the HDD Utility allows you to remotely manage "Check then Print", "Memory Print" and "Confidential Print" files. For added security, this function can be set to automatically render image data unreadable by overwriting it with zero and random data. You can also use it to protect confidential company information by completely erasing all of the hard disk data when the machine is retired.

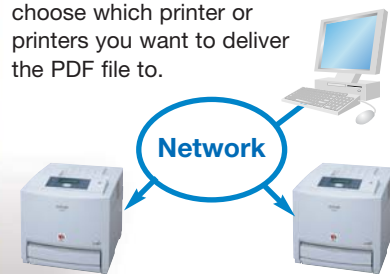
Direct Print with Quick PDF Print^{†2}

You can also print directly from a PC with simple "drag & drop" of the PDF file you want, without using the printer driver. Printing is quicker and easier than ever.

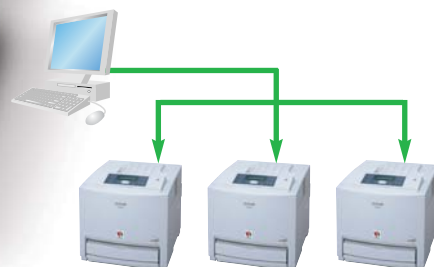
Quick PDF Print (Direct Printing System)^{†2}

The Direct Printing System is a utility that lets you send PDF files directly to the printer, bypassing the printer driver. Delivery Print and Parallel Print methods are also available.

Delivery Print: You can choose which printer or printers you want to deliver the PDF file to.



Parallel Print: Supports fast, high-volume printing by enabling you to print to multiple devices simultaneously



Advanced Management Functions

Web Administrative Tool

When two or more printers (of any type) are connected to the network, this tool allows network administrators to check each printer's settings and obtain real-time status information such as paper conditions, remaining toner and much more without ever having to leave their desks.

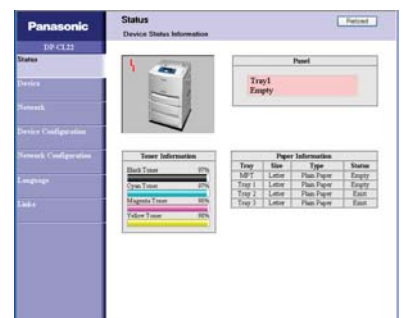


Print Count Manager

Print Count Manager enables an administrator to determine which group of users has permission to print in color and black & white, black & white only or no printing rights at all. You can also set limits on the number of pages allowed to be printed per group.

Embedded Web Server

This enables you to review the printer's status and set its configuration using a standard web browser.



^{†1} Requires optional Hard Disk Drive — sold separately.

^{†2} Requires optional Upgrade Kit (for PostScript® 3™).

DP-CL22 / CL18 Specifications

Performance

| | |
|------------------------------------|---|
| One-Pass Print Speed ^{*1} | DP-CL22: Up to 22 ppm in Color / Black & White (Letter, 600 x 600 dpi, Simplex) DP-CL18: Up to 18 ppm in Color / Black & White (Letter, 600 x 600 dpi, Simplex) |
| Print Resolution ^{*2} | Up to 1,200 x 1,200 dpi |
| First Print Time | DP-CL22: Approximate 13.5 seconds in Black & White, 14.5 seconds in Color DP-CL18: Approximate 15.5 seconds in Black & White / Color (Power save mode off, 600 x 600 dpi, Letter, Simplex) |
| Processor | DP-CL22: 600MHz RISC CPU DP-CL18: 400MHz RISC CPU |
| Memory (Std / Max) | 128 MB / 512 MB - 2 slots |

Connectivity

| | |
|--|---|
| Interface | Ethernet (100 Base-TX / 10 Base-T) / USB 2.0 (Full-Speed) / IEEE 1284 (ECP) Auto Switching, Simultaneous Ports |
| Network Features (#Requires upgrade kit option) | Network Setup Tool, Web Administrative Tool, Device Monitor (Windows), Embedded Web Launcher, Status Display (Mac) [†] , Email Notification, Embedded Web Server, Direct Printing System [†] |
| Printer Languages | PCL 6 Emulation / Adobe® PostScript® 3™ (Option) / PDF 1.4 (Option) |
| Resident Fonts | 84 PCL fonts (Standard) / 136 Adobe® PS fonts (Option) |
| Supplied Printer Drivers | Microsoft® Windows® 98, Windows® Me, Windows NT® 4.0, Windows® 2000, Windows® XP, Windows Server™ 2003 operating systems Mac OS 8.6, 9.0, 9.1, 9.2, Mac OS X 10.1, 10.2, 10.3 (When Adobe® PostScript® 3™ is enabled) |
| Network Operating System Support | Microsoft® Windows® 98, Windows® Me, Windows NT® 4.0, Windows® 2000, Windows® XP, Windows Server™ 2003 operating systems, NetWare 3.x, NetWare 4.x, NetWare 5.x, NetWare6, 6.5, UNIX (Solaris 2.3x-2.5x, 2.6, 7, 8, HP-UX 9.x and 10.x, BSD UNIX, AIX 4.x.x etc), Mac OS 8.6, 9.0, 9.1, 9.2, Mac OS X 10.1, 10.2, 10.3 (When Adobe® PostScript® 3™ is enabled) |
| Network Protocol Support | IPv4, IPv6, TCP, UDP, ICMP, ICMPv6, RARP, BOOTP, DHCP, LPD, FTP, TELNET, HTTP, POP3, SMTP, DNS, IPP, WINS, IPX/SPX, NetBEUI, SNMP/MIB, AppleTalk, ELAP, AARP, DDP, AEP, RTMP, ATP, ZIP, NBP and PAP (When Adobe® PostScript® 3™ is enabled) |
| Network Printing Protocol Support | FTP, LPR, IPP, Standard TCP/IP Port Printing, HP JetDirect Port Printing (TCP/IP, IPX/SPX), SMB, NetWare (PSEVER/RPRINTER mode in NDS/Bindery mode and NDPS), Email printing AppleTalk (When Adobe® PostScript® 3™ is enabled) |
| Web Server Support | Allows monitoring and managing printer from a standard Web Browser |

Paper Handling

| | |
|--------------------|---|
| Paper Input | Maximum: Up to 1,690 sheets - with optional 530 sheet paper feeders (20 lb. paper) Standard: Universal cassette - 530 sheets (20 lb. paper) Multi-purpose tray - 100 sheets (20 lb. paper) |
| Paper Output | Face Down 250 sheets (20 lb. paper) |
| Duplex Print | Automatic: Standard (DP-CL22), Option (DP-CL18) Manual: Standard |
| Media Types | Universal Cassette / Multi-purpose tray: Plain Paper, Bond / Letterhead Recycled Paper(20- 28 lb. paper), Thin Paper (16 - 20 lb. paper), Multi-purpose tray: Labels, Envelopes, Coated Paper, Thick Paper, Card Stock (up to 110 lb.) Transparency |
| Media Sizes | Universal Cassette: Letter, A4, Legal, B5 (JIS) Multi-purpose Tray: Letter, A4, Legal, B5 (JIS), A5, Executive, Custom (min. 3.5" x 5.8" / max. 8.5" x 14") |
| Universal Cassette | Auto Tray Selection, Auto Tray Switching, Auto Paper Size Detection Features |

Productivity Tools and Controls

| | |
|--|--|
| Document Enhancement Functions ^{*3} | PCL: Watermark, Overlay, Pages per Sheet, Zoom, Fit to Output Paper Size, Booklet, Collate, Poster, Mirror Image Printing, Reverse Page Order PostScript®: Watermark, Pages per Sheet, Scale, Collate |
| Enhanced Productivity Functions ^{*4} (Job Spooling) | PCL: Memory Print, Check then Print, Confidential Print PostScript®: Memory Print, Check then Print |
| Color Management Control | PCL: Device Color, Photo Color, Grayscale, ICM PostScript®: Device Color, Photo Color, Grayscale, ICM, ColorSync®, SWOP, Euroscale |
| Print Quality Control | 600 x 600 dpi, 1,200 x 600 dpi, 1,200 x 1,200 dpi, Image Reduction |
| Print Management Tool | Print Count Manager |

Operating Environment

| | |
|------------------------|---|
| Dimensions (W x D x H) | 16.5" x 21.1" x 15.7" - without optional paper feeders |
| Net Weight | approx. 65.7 lb., about 32 kg (including consumables) (without paper feeders) |
| Power Requirement | 120V AC, 50/60 Hz |
| Power Consumption | Maximum 1,200 W, Average 460 W, Power Save Mode: DP-CL18: 8 W, DP-CL22: 15 W |
| Environment | Operating: 50° F to 90.5° F (10° to 32.5° C) 15% - 80% RH |
| Regulatory | UL60950-1, FDA21 CFR Ch. 1 Part 1040 (HHS), FCC Rules & Regulations part 15 (Class B) and Part 18 |

Panasonic®

Panasonic Digital Document Company,
Unit of Panasonic Corporation of North America
Two Panasonic Way, Secaucus, NJ 07094
For a local dealer, please call 1-800-742-8086
<http://www.panasonic.com/office>

Service and Support

| | |
|----------|--|
| Warranty | Provided by dealer (Ask dealer for details) |
| Support | Remote Maintenance, Email Notification (Requires email Connection) |

User Replaceable Consumables^{*5} & Accessories

| | |
|--|---|
| Accumulator Unit | 100,000 pages (DQ-BE3) |
| Fuser Unit | 100,000 pages (DQ-FU3) |
| Transfer Roller | 100,000 pages (DQ-BR3) |
| Color Print Cartridge | 15,000 pages (DQ-UP3C) |
| Black Print Cartridge | 15,000 pages (DQ-UP3K) |
| Toner Cartridges ^{*6} | 6,000 pages each (5% coverage) - Yellow (DQ-UR3Y), Magenta (DQ-UR3M), Cyan (DQ-UR3C) and Black (DQ-UR3K) 3,000 pages each (5% coverage) - Yellow (DQ-UR4Y), Magenta (DQ-UR4M) and Cyan (DQ-UR4C) |
| Waste Toner Cartridge | 14,000 pages (Full Color - 20 % coverage) (DQ-BF3) |
| Optional Paper Feeder | Up to 530 sheets each (20 lb.) - Stack up to 2 additional feeders (DA-DS1) |
| Automatic Duplex Unit | DP-CL22: Standard, DP-CL18: Option (KX-CLAD1) |
| Internal Hard Disk Drive ^{*7} | 40 GB - Enables Job Spooling, Check then Print, Memory Print and Confidential Print, Secure data removal NSA Standard (KX-CLHD2) |
| Upgrade Kit (for PostScript® 3™) | Adobe® PostScript® 3™ (DA-MC2 for DP-CL18, DA-MC3 for DP-CL22) Enables Direct Printing System for PDF print. |
| Expandable Memory | 128 MB (KX-CLEM3), 256 MB (KX-CLEM4) |
| Convenience Copy Solution | @V2100-PAN: Color and Black & White copying (up to 9 cpm in black & white / 1.5 cpm in color), Integrated ADF, Network scanning, Scan to email. DS-610CU-PAN: Color and Black & White copying (up to 9 cpm in black & white / 1.5 cpm in color), Optional ADF (ADF1030-PAN), Scan to PC (TWIN) |

*1 Maximum speed on continuous printing.

*2 Additional memory is recommended to ensure 1,200 x 1,200 dpi operation regardless of image size, paper size and in duplex mode.

*3 Depending on the OS, some of these functions are not available.

*4 Requires Hard Disk Drive.

*5 The rated life expectancy of each consumable is based on printing under specific operating conditions such as page coverage for a particular page size (5% coverage per color at 600 x 600 dpi resolution on Letter/A4 size paper). The actual consumable's life will vary depending on its use and other printing variables including page coverage, paper size, media type, print resolution, continuous or intermittent printing, number of color planes, ambient temperature and humidity.

*6 Printer includes starter toner cartridge that yields 2,500 pages (based on 5% page coverage per color)

*7 User area approx. 31 GB



As an ENERGY STAR® Partner, Panasonic has determined that this product meets the ENERGY STAR® Guidelines for energy efficiency. (ENERGY STAR® and the ENERGY STAR® certification marks are registered US marks.)

AGFA Monotype
Font & Imaging Professionals



Adobe PostScript® 3

Scalable type outlines are licensed from Agfa Monotype Corporation. CG, Intellifont, MicroType and Universal Font Scaling Technology (UFST) are trademarks of Agfa Monotype Corporation and may be registered in some jurisdictions.

Agfa® and the Agfa rhombus are registered trademarks of Agfa-Gevaert N.V. registered in the U.S. Patent and Trademark Office and may be registered in other jurisdictions. Monotype® is a registered trademark of AMT registered in the U.S. Patent and Trademark Office and may be registered in other jurisdictions. ColorTune® is a registered trademark of Agfa-Gevaert N.V. registered in the U.S. Patent and Trademark Office and may be registered in other jurisdictions. Profile Tool Kit™, Profile Studio™ and Profile Optimizer™ are trademarks of AMT and may be registered in certain jurisdictions.



IPv6 Ready Logo Phase-1

IPv6 Ready Logo is the international IPv6 product's certification program managed by the IPv6 Ready Logo Committee.



Adobe, PostScript, PostScript 3 and the PostScript logo are either registered trademarks or trademarks of Adobe Systems Incorporated in the United States and/or other countries.

Microsoft, Windows, Windows NT, Windows Server and the Windows logo are trademarks or registered trademarks of Microsoft Corporation in the United States and/or other countries.
Windows® is an abbreviation of Microsoft® Windows® operating system.



HP, HP-UX, JetDirect and PCL are trademarks of Hewlett-Packard Company. UNIX is a trademark of X/Open Company Ltd.
Solaris is a registered trademark of Sun Microsystems, Inc. in the United States and other countries.
AIX is a trademark of International Business Machines Corporation in the United States, other countries, or both.
NetWare, NDS and NDPS are registered trademarks of Novell, Inc. in the United States and other countries.
IPX/SPX is a trademark of Novell, Inc. in the United States and other countries.
AppleTalk, Mac, Mac OS, the Mac logo and ColorSync are registered trademarks of Apple Computer, Inc.
All other brand or product names are the property of their respective holders. Design and specifications are subject to change without notice.