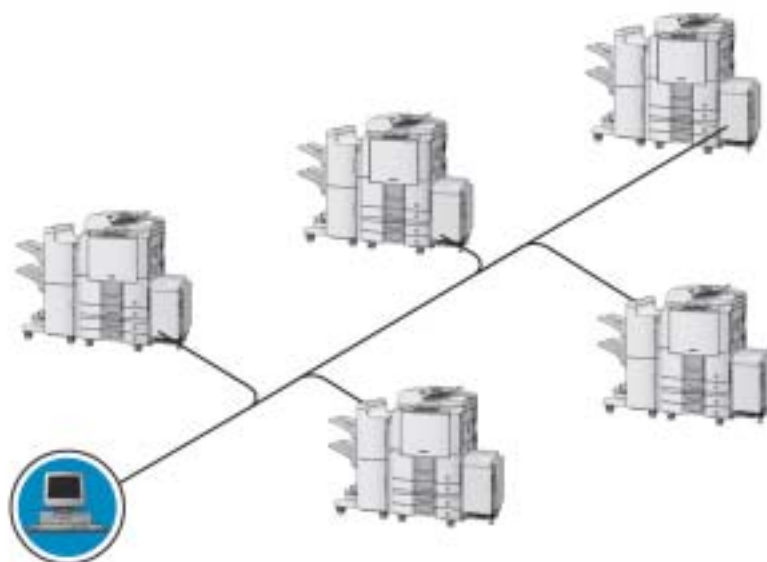


# OneRIP™

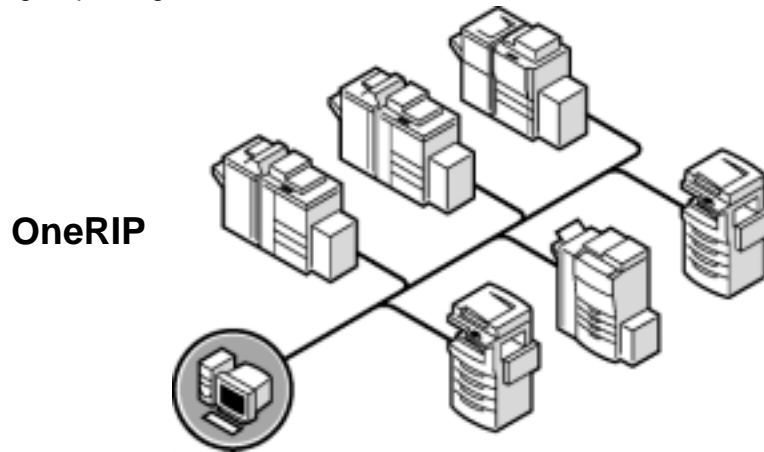
For

# Panasonic®



### What is OneRIP?

OneRIP is a PC-based print server that allows you to manage and print to multiple printers of different makes and models. Connect to color and black and white digital printers all from a single server. OneRIP features like scanning, variable data printing, and clustering enhance printer power. It integrates seamlessly into almost any network environment, prints common file types, and lets you add or change printers depending on your needs. Use OneRIP to increase control, functionality, and flexibility in your print environment. Created with the user in mind, OneRIP is your link to digital printing.



#### Scanback

Scans images off the MFP's glass and saves them as digital files - use your digital copier as a scanner.

#### Electronic Collation

Collates multi-page documents without an expensive output sorter/finisher.

#### Priority Printing

Prints jobs in designated order—urgent jobs automatically go to the top of the print queue.

#### Simultaneous Rip & Print

Processes incoming jobs while other files are printing for more efficient production.

#### Intelligent Scheduling™

Maximizes system throughput in multi-printer environments,

#### Vite™

Variable image and text editor that allows you to print customized documents.

#### Clustering

Group like-printers together, split copies and jobs across multiple printers for faster production.

#### Continuous Print

Saves time by eliminating the cycle up/down of your printer.

### OneRIP Benefits

#### Adds Functionality to Your Copier

- Turns your copier into a digital printer
- Print PCL5e, PostScript, TIFF, JPEG, ASCII, and CCITT G4 file formats
- Supports all copier finishing options like duplex, fold, staple, etc
- Features like scanning and variable data printing make your printer a more useful tool

#### Integrates Seamlessly into Your Workflow

- Supports Windows and Macintosh users and supports most networks
- Connects to printers anywhere in the building, over the network
- Drives b/w digital copiers and color digital copiers using same server
- Accepts output from Unix/AS400 machines

#### Easy to Use

- Similar driver interface for all copiers – clients can print to MFPs just as they do to any network printer
- Users can control all available finishing functions
- Job status monitor lets clients and operator view job queue and status for each printer
- Users only need to learn one software package for all printers

#### Scalable Solution

- Open architecture allows you to add/subtract printers and copiers as needed
- Flexible pricing means you only buy what you need now - Industry-standard PC platform simplifies upgrades

---

### OneRIP Advantages

#### Solution is cost effective in any environment

- OneRIP works equally well in single and multiple printer environments

#### Cluster printers on demand

- Cluster printers as needed and use as stand-alone printers when volumes are lower.

#### Ordering is easy – buy only what you need now

- Flexible pricing enables you to purchase what you need when you need it

#### Place printers virtually anywhere

- OneRIP connects most printers via network, eliminating distance restrictions

#### Non-proprietary systems are easier to learn, manage, and support

- OneRIP is based on an industry-standard PC simplifying technical support and training

#### Save on equipment costs

- A single server supports multiple black / white printers so you have less hardware to buy

#### Cluster printers without learning new software

- Clustering is included with all OneRIP systems saving time on training

## OneRIP Specifications and Connectivity

### **Standard Configuration for OneRIP System - OneRIP server**

- (1) connection to MFP
- OneRIP software
- Windows 2000 Professional
- Network software: Novell, Microsoft
- Vite 100 records (requires Adobe Acrobat)

### **OneRIP Systems for Black and White Printing**

- OneRIP for Panasonic

### **Features** (included with each system)

- Clustering (includes multi-printer support, copy splitting and load balancing)
- Scanback (may require additional hardware)
- Vite (variable data printing software) 100 records

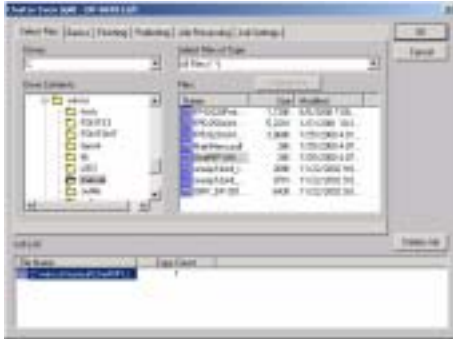
### **Options (not included with systems)**

- Vite 25,000 records—Vite 200,000 records—Vite unlimited records
- Acrobat 5.0

Solutions... by Panasonic

Printing a job from the OneRIP Server is easy.

At the Media Server each job tab allows you to select the print options for your file.



### Select Files Tab

Select the job you want to print.



### Basics Tab

Select the number of copies, job priority, duplex, paper size, paper tray, and mode for your job.



### Finishing Tab

Select the finishing options available with your printer like sorting, stapling, folding, and hole punching.



### Publishing Tab

Select additional options like covers, inserts, transparencies, and transparency interleave.

Finish making your job selections at the job tabs and then monitor the progress of your job on the Server interface.



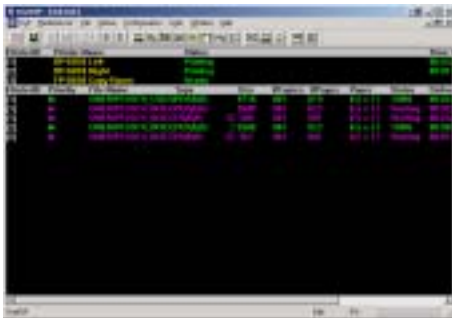
### Job Processing Tab

Select whether you want to print the job, but not save it, save the job, but not print it or send the job and save it on the system for future re-printing. At this tab you can also enter a job identification and generate a job separator which will add a blank page at the end of your document to avoid confusion with other users' files.



### Job Setting Tab

Get a summary of all of the options you have selected for your job. This is an easy way to review how your job will print and to determine if changes need to be made. You can also save these settings to use on future jobs which will be printed with the same specifications.



### Server Interface

Control all aspects of all jobs at the OneRIP server interface. At the server level you can delete a job regardless of who sent it. Check the status on any job in the queue and all connected printers. Keep track of departmental printing with account logs.

Printing a job from the OneRIP Client is easy too. Start Print Dialog Box and then click through five tabs to select the printer options for your job.



### Print Dialog Box

Printing a job from the OneRIP Client is easy too. Start Print Dialog Box and then click through five tabs to select the printer options for your job.



### Basics Tab

Select resolution, duplex printing, paper size, paper tray, orientation, and photo mode.



### Finishing Tab

Select sorting, stapling, folding, booklet, and hole punch options.

Finish selecting your job options from the Client and then monitor your job's progress at the Client Status Screen.



### Publishing Tab

Select the number of pages per sheet, transparencies, covers, page inserts, tray pulls for covers and inserts.



### Job Processing Tab

Select how you want the job to be processed, enter a job ID, generate a job separator, use TCP/IP, verify server name, use predefined cluster, select what printer to send you job to.

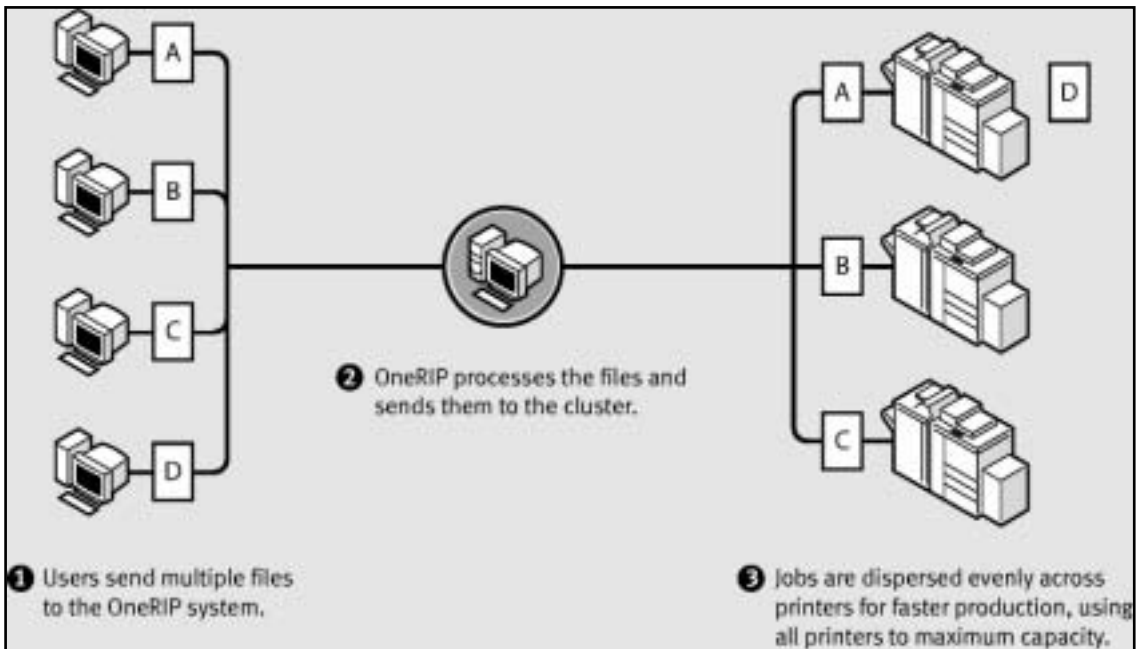


### Client Status

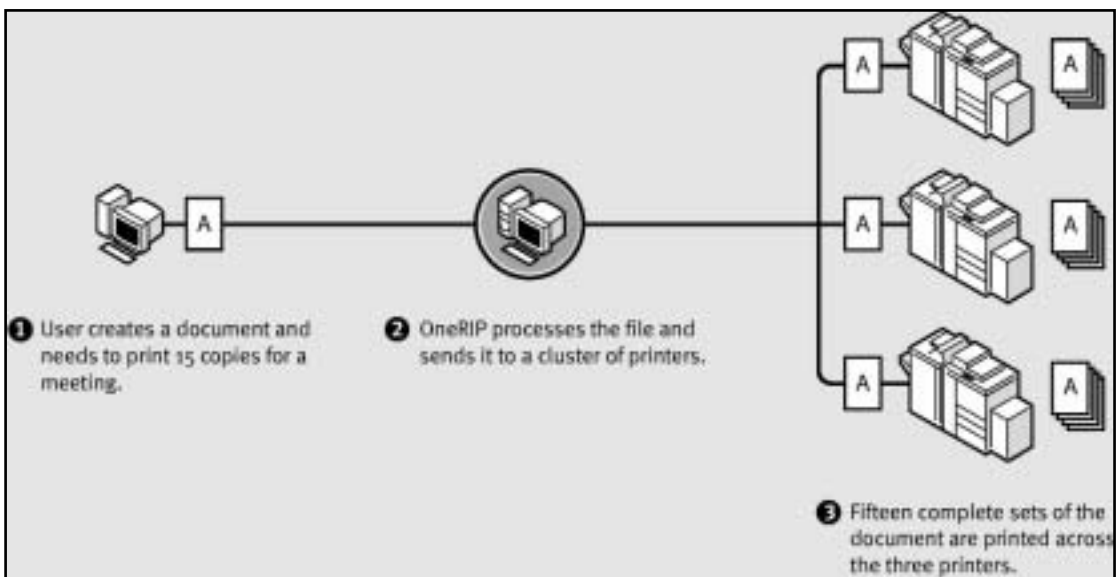
Users can check the status of their jobs from the client. The client informs the user of where their job is in the print queue, estimated delivery time, number of copies selected, file type, job priority, number of pages in file, and on which output device it will be printed. If the job needs to be cancelled the user can delete their job from the print queue without affecting other jobs sent from other clients.

## Load Balancing and Copy Splitting

Use **Load Balancing** to split jobs evenly across multiple printers for faster production.



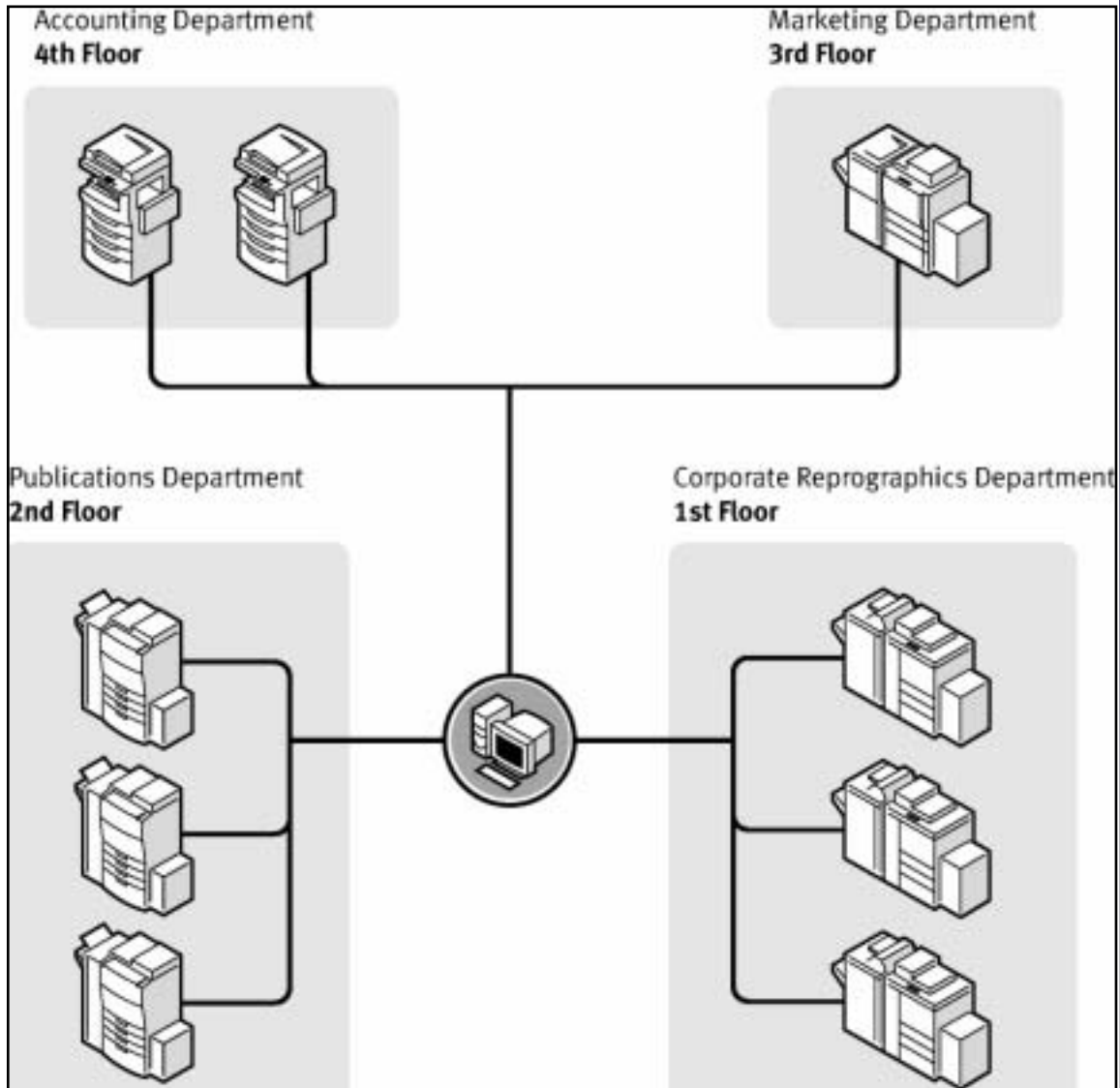
Use **Copy Splitting** to send a job to a cluster of printers for faster production.



## OneRIP Clustering

### OneRIP On Demand Clustering

Cluster printers in multiple configurations as needed.



Solutions... by Panasonic